

TECHNICAL INFORMATION



GASEOUS FUEL FILTERS

HILCO® has been manufacturing filters for gaseous fuel for over 25 years. These filters are designed and built to ASME Code Section VIII, Div. 1. The filters are specifically designed for gas turbine systems with high pressure, high flow rate and minimal dirt load.

HILCO gaseous fuel filters are available in simplex design and in duplex arrangements for continuous operation. The duplex models use HILCO's zero leakage 6-port transfer valve designed specifically for gaseous applications.

HILCO gaseous fuel filters use cleanable pleated strainer cartridges for efficient filtration. These cartridges can be cleaned, and reused many times with a water hose spray, steam jenny or air.



The following is an example of a HILCO gaseous fuel filter.

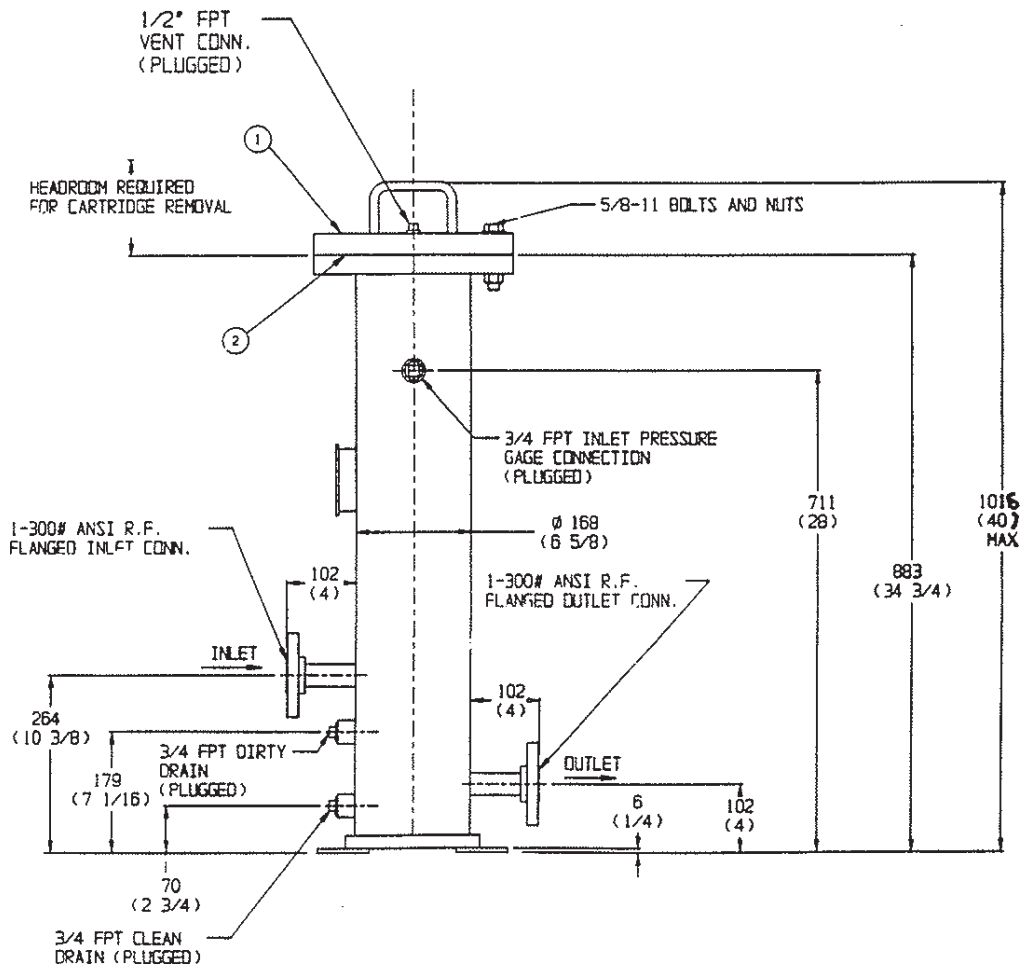
MODEL: 02518-520702021
ASME Code with "U" Stamp and Certificates

CARTRIDGE: Pleated Strainer PS518-10-C

FLOW: 537 Nm³/hr (316 SCFM)

DESIGN PRESSURE: 22 kgf/cm² (313 PSIG)

INITIAL PRESSURE DROP: 0.010-0.015 Kgf/cm² (0.14-0.20 PSID)



*The Hilliard Corporation reserves the right to change specifications and dimensions at any time.
Please contact the factory for the most current information.*

HILCO® is a registered trademark of The Hilliard Corporation.

The Hilliard Corporation
100 West Fourth Street
Elmira, New York 14902-1504
Phone: 607-733-7121
Fax: 607-733-0928
<http://www.hilliardcorp.com>

Your Local Representative:

